



3809 Spring Grove Avenue
Cincinnati, OH 45223
513-541-4211
www.ohiotile.com

MOD: SLATE PORCELAIN™



Features Beige MD01 12" x 24"

Mod: Slate Porcelain™ marries strong, alluring graphics, emulating the grand beauty of slate, with a fundamental color palette of beige, gray and charcoal. This series' 12" x 24" size is the foundation for stand-out, timeless design. A 2" x 2" mosaic and a 4" x 12" bullnose complete its size package.

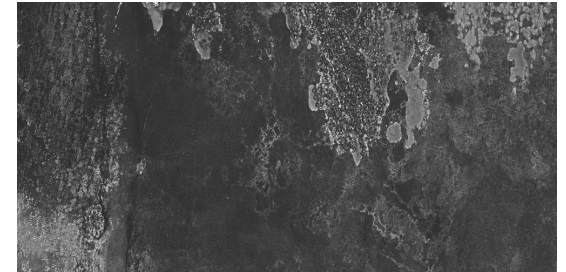
Beige MD01



Gray MD02



Charcoal MD03





3809 Spring Grove Avenue
 Cincinnati, OH 45223
 513-541-4211
 www.ohiotile.com

MOD: SLATE

PORCELAIN™



COLORS/FINISH/SIZES/EDGE

Colors	Beige MD01 Gray MD02 Charcoal MD03
Finish	Matte
Sizes	12" x 24" 2" x 2" Mosaic
Edge	Calibrated

TECHNICAL DATA

Color Variation	V3
DCOF	≥0.42
Breaking Strength	≥325 lbs.
MOHs	7
Water Absorption	<0.5%
Chemical Resistance	Class A
Abrasion Resistance	Class III
ANSI Classification	IW
Thermal Shock Resistant	Resistant
Frost Resistance	Resistant

PACKAGING

Size (Nominal)	12" x 24"	2" x 2" Mosaic	4" x 12" Bullnose
Size (Actual)	11 3/4" x 23 11/16"	11 3/4" x 11-3/4"	4" x 11 3/4"
Pieces per Carton	8	10	15
Cartons per Pallet	32	45	90
SQFT per Carton	15.49	9.68	4.64
SQFT per Pallet	495.70	435.60	417.60
Weight per Carton (lbs.)	60.00	35.00	22.00
Thickness	8.2mm	8.2mm	9.0mm
Minimum Recommended Grout Joint	3/16"	3/16"	1/8"